

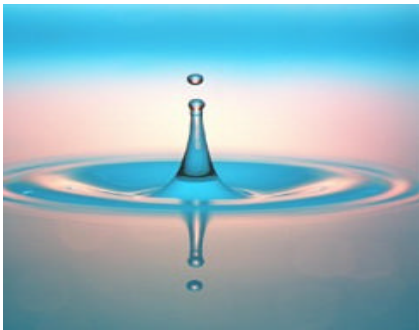


NDS

Utility Management Systems

EDIFICE[®]

Utility
Management
Systems



Improved Customer Service, Productivity, and Overall Efficiency

Headquartered in Falmouth, Maine, Northern Data Systems has developed and supported software for New England Utilities for 30 years. We are “local” to New England and offer total “local” support for your software, hardware, and everything in between. We have a long term track record of success with our many New England utility customers.

EDIFICE™-- Powerful, Easy to Use, Comprehensive

The EDIFICE Utility Management System is built upon 30 years of proven results in the utility marketplace. EDIFICE brings you the latest technology yielding a complete system that is not only right for today, but is committed towards staying competitive in the future. Inbuilt E-mail and Internet access along with powerful management reporting allows you to improve productivity and the overall efficiency of your organization. Our emphasis on ease of use and integration means that your staff is able to serve your utility quickly and efficiently. The EDIFICE product line consists of a complete utility management solution, from billing to job costing and project management. Better yet, it all works together. No need to buy individual products from separate vendors and try to piece them together.

The NDS Difference – We Take Care of All Your Needs

We don't tell you to call someone else for help. To get the most out of your system investment and unleash the power of EDIFICE, NDS Utility Management Systems offers a full range of consulting services. Our range of services include:

- ❖ Network Services
- ❖ Internet Services
- ❖ Software Support
- ❖ Hardware Support
- ❖ System Implementation
- ❖ Software Consulting
- ❖ Customer Education
- ❖ Electronic Forms Processing
- ❖ Hardware Procurement
- ❖ Forms & Supplies
- ❖ Financing

NDS Utility Management Systems, with headquarters in Falmouth, Maine, is a software developer and consulting services company to the New England utility marketplace.



Current Technology

Genuine Windows™ Technology

Integrated Internet Access

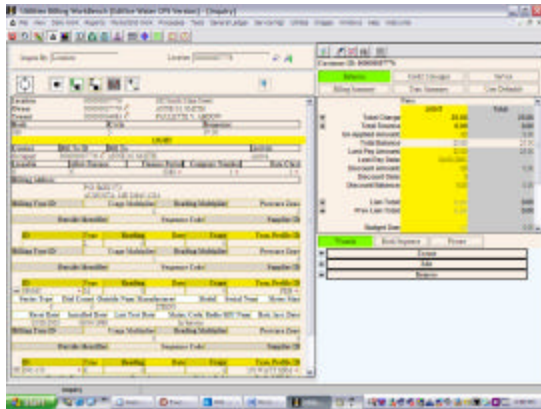
Integrated E-Mail

ODBC integration to Word™, Excel™, Access™, Crystal Reports™

Executes under Windows™, Linux™, and UNIX™

EDIFICE Modules

Utility Billing Module



- ❖ Multiple Services Billing
- ❖ Advanced Customer Searches
- ❖ User-Definable Billing Cycles
- ❖ User-Definable Rate Structure
- ❖ Automated Meter Sequencing
- ❖ Detailed Customer History Inquiry
- ❖ Automatic Lien Notices
- ❖ Detailed Service History
- ❖ Hydrant, Meter & Pipe Tracking
- ❖ Supports Electronic Reader Interface

Rate Modeling Module

- ❖ Revenue Projection Analysis
- ❖ Flexible Rate Analysis Reporting
- ❖ Advanced “What If” Analysis
- ❖ Supports Popular Database & Spreadsheet Programs

Job Costing/Work Orders Module

- ❖ Totally User-Definable with Unlimited Flexibility
- ❖ Unlimited Job Cost History
- ❖ Accommodates “patterned” Job Models
- ❖ Tracks Job and Phase Status
- ❖ Handles “Completed Job” and “Percent Complete” Accounting Methods
- ❖ Consolidates Jobs for Project Analysis
- ❖ Complete & Secure Audit Trail

- ❖ Integrated With all Other Applications

Equipment Management Module

- ❖ Maintains all Vital Information (Insurance, Serial Numbers, etc.)
- ❖ Service Maintenance Schedules
- ❖ Equipment Location Tracking
- ❖ Detailed Service History by Item
- ❖ Depreciation by straight line, declining balance, ACRS and Modified ACRS
- ❖ Advanced Equipment Analysis

Inventory Management Module

- ❖ Maintains Multiple Location Inventory
- ❖ Advanced Serialized Tracking Ability
- ❖ Supports HAZMAT
- ❖ Bill of Material Inventory Tracking

Service Management Module

- ❖ Single-Screen Customer Call Control
- ❖ Work Order Creation & Tracking
- ❖ Open Calls & Call History by Site
- ❖ Call Assignment for Future Scheduling
- ❖ Technician Productivity Analysis

Other Integrated Modules

- ❖ Purchase Order Module
- ❖ Project Management Module
- ❖ Time & Material Module
- ❖ Accounts Payable, General Ledger, & Payroll Modules

Document Imaging

- ❖ Scan documents with OCR
- ❖ On-line retrieval of documents such as Blueprints and Schematics
- ❖ COLD Storage Option